

CRO Closure Update and End Land Uses

Nicole Nicholas, Lead, Social Responsibility
Nic Milligan, 1stDraft Consultants

The Teck logo is displayed in a bold, blue, sans-serif font. It is positioned in the bottom right corner of the slide, which has a white background. The logo consists of the word "Teck" in a single line.

Agenda

Safety Message

History of Cardinal River mine

Approach to Mine Closure

Milestones

Draft Mine Closure Plan

Feedback we are Seeking

History Highlights of Cardinal River mine

1969 – Coal Production begins at Luscar

1996 – Cheviot Mine EIA (Environmental Impact Assessment) and Permit Application to Joint Panel

2001 – Joint Panel final approval of Cheviot Mine

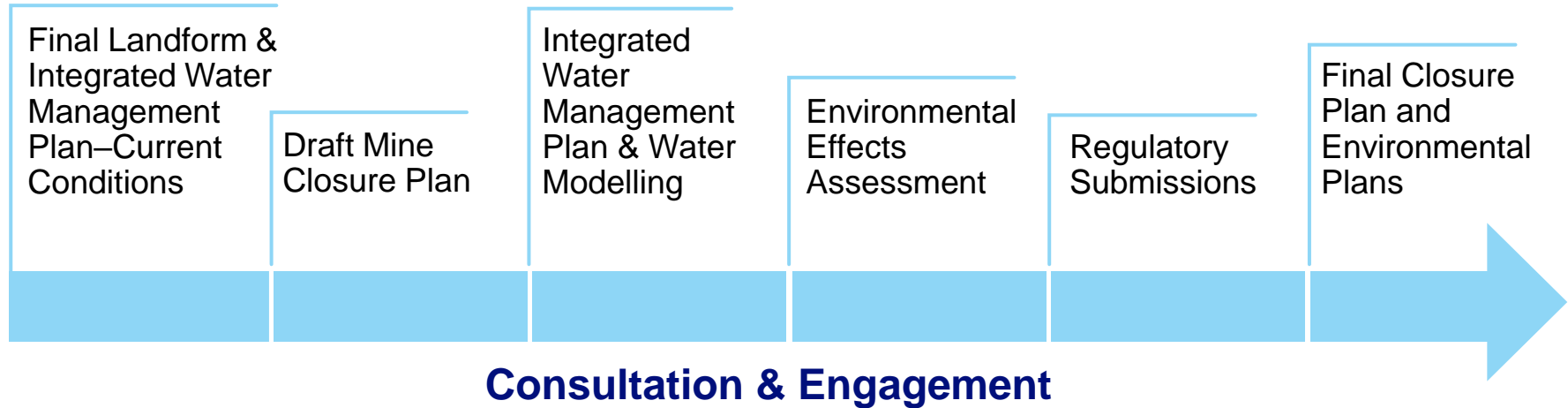
2004 – Haul road construction and first mining at Cheviot

2007-2019 – applications and approvals for Prospect, McLeod, Harris, MacKenzie and Redcap mining areas

May 2019 – Cardinal River announces it will not proceed with the MacKenzie Redcap extension, and will move into closure

June 2020 – last coal mined

Milestones–Closure Work



Approach to Mine Closure



Considers employees, First Nations and communities of interest use of land.



Healthy environment: functioning terrestrial and aquatic ecosystems

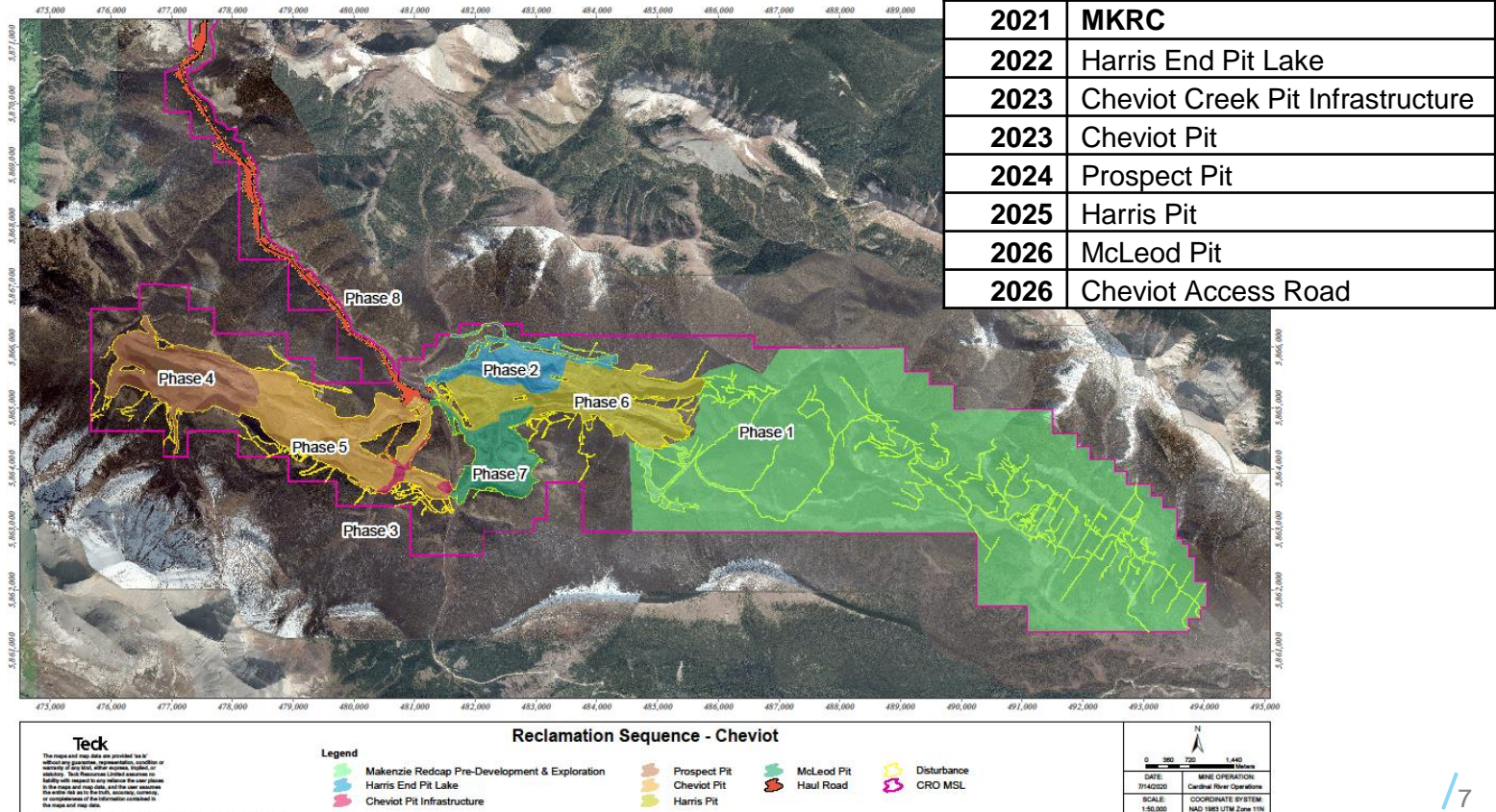
What are we striving for?

Closure Goal: establish self-sustaining landscapes and ecosystems that support diverse land use objectives and conditions of equivalent capability to pre-development conditions

- This involves consideration of
 - Safety
 - Wildlife Habitat
 - Access

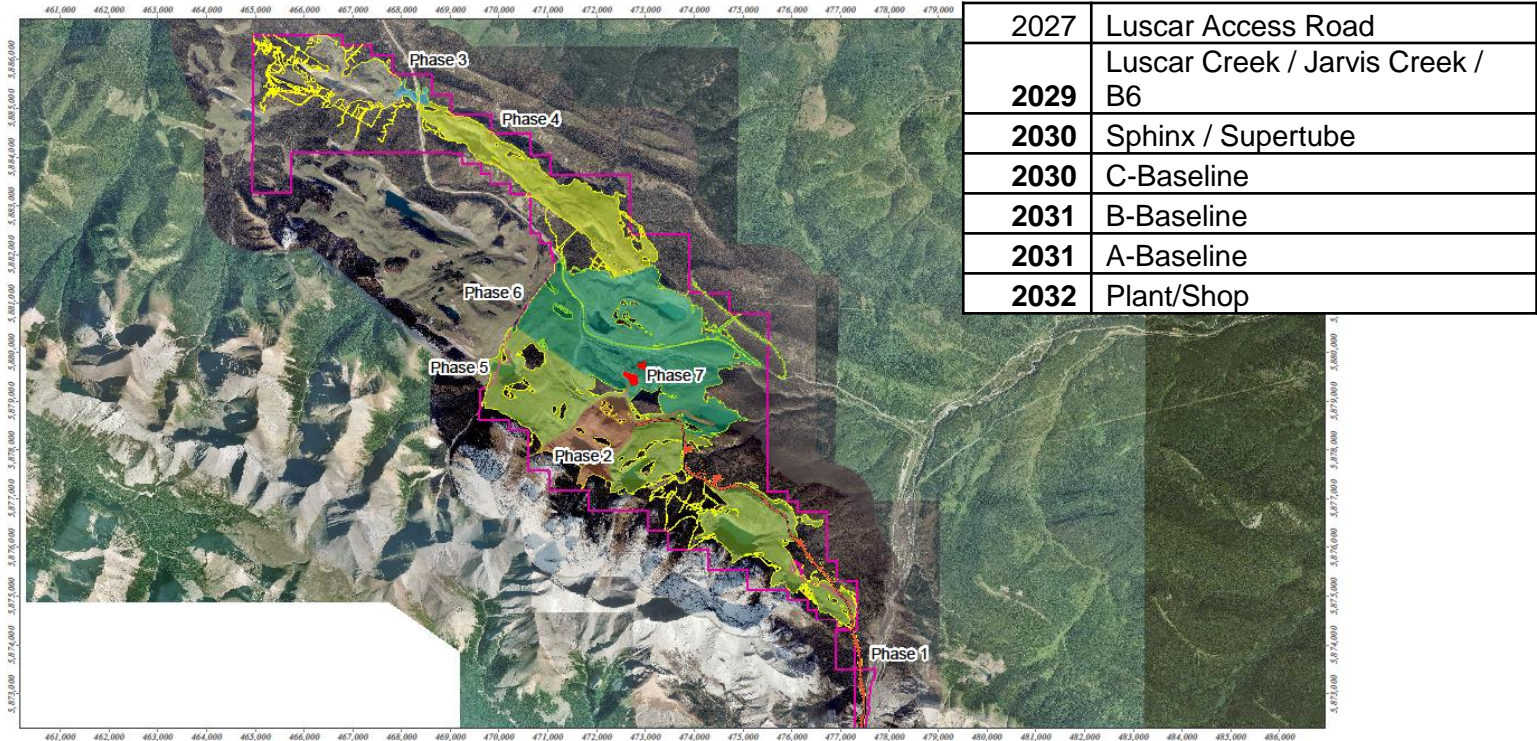
Draft Mine Closure Plan

Proposed reclamation sequence – Cheviot



Draft Mine Closure Plan

Proposed reclamation sequence – Luscar



2027	Luscar Access Road
2029	Luscar Creek / Jarvis Creek / B6
2030	Sphinx / Supertube
2030	C-Baseline
2031	B-Baseline
2031	A-Baseline
2032	Plant/Shop

Teck

The proposed map data are provided "as is" without any warranty, either expressed or implied, by Teck Resources Limited or its subsidiaries. Teck Resources Limited does not warrant that the data is accurate, complete or up to date. All use of the data is at the user's discretion. The user assumes all liability for any errors, omissions or inaccuracies in the data and any use of the data. The user agrees to indemnify and hold Teck Resources Limited harmless from and against all claims, damages, costs and expenses, including reasonable attorneys' fees, arising out of or from the use of the data.

Reclamation Sequence - Luscar

Haul Road	Sphinx Supertube	A Baseline	Plant & Shop	Disturbance
Luscar Creek Jarvis Creek 50-B6 End Pit Lake	C Baseline	B Baseline		CRO MSL

0 400 800 1,200
Meters

DATE: 31/05/2020 MINE OPERATION: Cardinal River Operations

SCALE: 1:65,000 COORDINATE SYSTEM: NAD 1983 UTM Zone 11N

Feedback we are seeking

- Where can we integrate Traditional Land Uses back onto the landscape?
- Where can we re-establish or accommodate recreation back on the landscape?
- How do we integrate Social and Ecological values for closure planning?

Understanding that

- The final landform is set based on previous development permits
- A Land Management Plan exists for the Luscar mine
- A Land Management Plan from Alberta Environment and Parks will need to be developed for Cheviot mine



Thank you

Teck